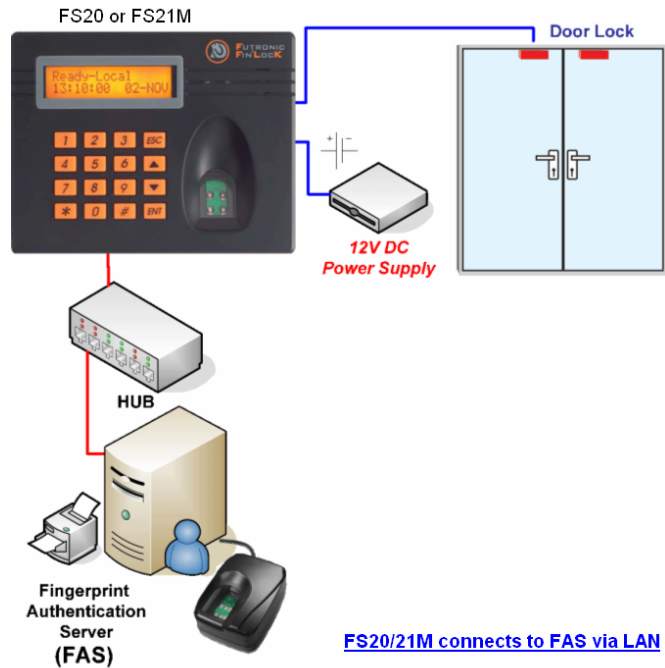




**FAS** is a Futronic proprietary software running on Windows 2000/XP/Vista for user/finger database management and access/attendance control. It is running on PC as a background service with a web-based user interface which can be accessed by using standard Windows Internet Explorer(IE) on any PC connected to LAN or Internet. Any ordinary computer user can start to use FAS with almost no training.

FAS is a control program for Futronic Fin'Lock([FS20](#) and [FS21M](#)) through LAN or Internet. With proper network setting, Fin'locks installed at different physical locations can be controlled by one FAS in a central location. User data(including fingerprint) and access log can be transferred between FAS and every individual Fin'lock under the control of the system administrator. FAS can also control the access permission/denial of a particular user on every connected Fin'lock. The communication between FAS and Fin'lock is encrypted. Moreover, it is not necessary for the system administrator to be located at the place where the FAS is installed. FAS administration can be done on any PC connected to LAN or Internet by using standard Windows Internet Explorer(IE). So FAS and Fin'lock together provide a complete fingerprint access/attendance control solution that makes remote control over internet a very simple task.

Users/fingers can be registered to FAS by using the [Futronic FS80 USB2.0 fingerprint scanner](#). Then it can receive authentication request from any Fin'Lock([FS20](#) and [FS21M](#))connected through LAN/Internet and then return the authentication result.

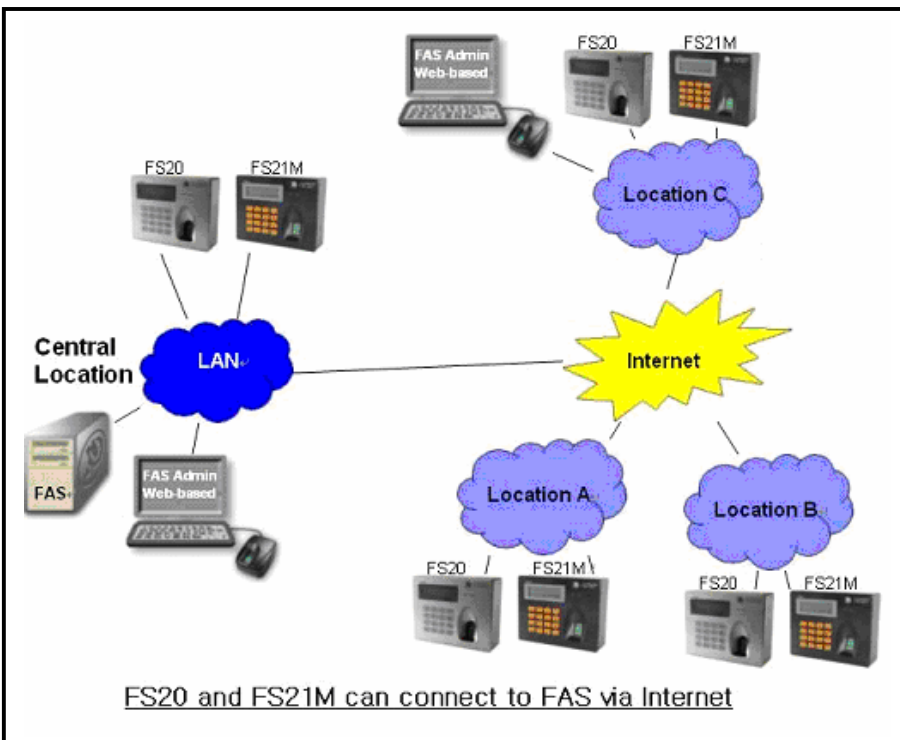


**Authentication procedure:**

- A freshly captured fingerprint is sent from any Fin'Lock to FAS.
- Upon receipt, FAS will match it to the database of pre-registered fingerprint and return the result(match or no match) back to the Fin'Lock.
- And FAS will log this event: date, time, Fin'Lock ID that send the fingerprint and matched user ID, if there is a "match".
- Upon receipt, the Fin'Lock can take appropriate action(access or no access) according to the returned result from FAS.

**System requirements**

- MS Windows 2000 Professional, XP Home/Professional, MS Vista and MS Windows 2003 Server
- P4 2.4G processor or higher
- 512MB RAM minimum
- 100MB hard disk space minimum
- USB port and CDROM drive



**Hense Technology Pte. Ltd.**  
Blk 212, Hougang Street 21,  
#03-319, Singapore 530212  
Tel: 62859890  
Fax: 62854813  
[www.hensetech.com.sg](http://www.hensetech.com.sg)  
[sales@hensetech.com.sg](mailto:sales@hensetech.com.sg)

## Major features

- It can match fingerprints sent from all connected Fin'Locks with its own user/finger database and return the result to the particular Fin'Lock.
- Fingerprint recognition accuracy: FAR- $10^{-6}$ , FRR- $10^{-2}$ .
- More than one Fin'Locks can be connected to FAS through LAN or Internet to form a cluster for large scale access control application.
- User/finger can be registered to FAS by using standard [Futronic FS80 USB2.0 fingerprint scanner](#). Each user can register up to 3 fingers.
- All user attributes are editable by a web-based user interface through Internet Explorer(IE) from any PC in LAN or Internet.
- Use MS-SQL 2005 Express for User/Finger and Access Log Database.
- User/Finger database can be backup and restore.
- User information(without fingerprint data) can also be backup and restore
- User/Finger database can be transferred between FAS and all Fin'Locks.
- Support up to a maximum of 99 user groups for flexible attendance control report and access permission/denial setting.
- Access Log and attendance report in FAS can be exported in Excel and Plain Text format
- Support 3 different attendance report(in/out setting) options for each user group:
  - First and Last in 24 hours
  - First in 24 hours
  - In/Out By Sessions, in which session can be defined across mid-night
- Access permission/denial setting that can be defined:
  - For each Fin'lock and,
  - Per user or per user group and,
  - For a period of days or days in every week(for example, no access for all Sat & Sun).

## Single Sign On Ready

Besides handling physical access control as described above, FAS is also ready for logical access control. For any workstation in LAN, with specific logon client software and a [Futronic FS80 USB2.0 fingerprint scanner](#) connected, it can scan an user's fingerprint and send it to FAS for authentication. If it is matched, this user will logon to a specific file and application server accordingly. So once an user registers finger(s) in FAS, the finger(s) can be used for both door entrance(physical access) and computer logon(logical access). This is a true SINGLE SIGN ON working environment as illustrated in the following diagram. Please contact Futronic for more information.

